



LASTENTABEL - COURBES DE CHARGES - LOAD CURVES - LASTKURVEN - CURVE DI CARICO - CURVAS DE CARGAS

|     |              |       |       |       |       |        |        |        |        |        |         |
|-----|--------------|-------|-------|-------|-------|--------|--------|--------|--------|--------|---------|
| m   | 2,20 - 14,20 | 16    | 19    | 22    | 25    | 28     | 31     | 33     | 36     | 38     | 42      |
| kg  | 4000         | 3480  | 2850  | 2390  | 2060  | 1800   | 1590   | 1480   | 1330   | 1250   | 1100    |
| ft  | 7'3" - 46'7" | 52'6" | 62'4" | 72'2" | 82'0" | 91'10" | 101'8" | 108'3" | 118'1" | 124'8" | 137'10" |
| lbs | 8820         | 7670  | 6280  | 5270  | 4540  | 3970   | 3510   | 3260   | 2930   | 2760   | 2430    |

|     |              |       |       |       |       |        |        |        |        |        |
|-----|--------------|-------|-------|-------|-------|--------|--------|--------|--------|--------|
| m   | 2,20 - 14,70 | 16    | 19    | 22    | 25    | 28     | 31     | 33     | 36     | 38     |
| kg  | 4000         | 3620  | 2960  | 2490  | 2140  | 1880   | 1660   | 1540   | 1390   | 1300   |
| ft  | 7'3" - 48'3" | 52'6" | 62'4" | 72'2" | 82'0" | 91'10" | 101'8" | 108'3" | 118'1" | 124'8" |
| lbs | 8820         | 7980  | 6530  | 5490  | 4720  | 4150   | 3660   | 3400   | 3060   | 2870   |

|     |               |       |       |       |       |        |        |        |
|-----|---------------|-------|-------|-------|-------|--------|--------|--------|
| m   | 2,20 - 15,50  | 16    | 19    | 22    | 25    | 28     | 31     | 33     |
| kg  | 4000          | 3860  | 3150  | 2660  | 2290  | 2000   | 1780   | 1650   |
| ft  | 7'3" - 50'10" | 52'6" | 62'4" | 72'2" | 82'0" | 91'10" | 101'8" | 108'3" |
| lbs | 8820          | 8510  | 6940  | 5860  | 5050  | 4410   | 3920   | 3640   |



|     |              |        |        |        |        |        |         |
|-----|--------------|--------|--------|--------|--------|--------|---------|
| m   | 2,20 - 25    | 28     | 31     | 33     | 36     | 38     | 42      |
| kg  | 2000         | 1800   | 1590   | 1480   | 1330   | 1250   | 1100    |
| ft  | 7'3" - 82'0" | 91'10" | 101'8" | 108'3" | 118'1" | 124'8" | 137'10" |
| lbs | 4410         | 3970   | 3510   | 3260   | 2930   | 2760   | 2430    |



|     |              |        |        |        |        |        |         |
|-----|--------------|--------|--------|--------|--------|--------|---------|
| m   | 2,20 - 27,31 | 28     | 31     | 33     | 36     | 38     | 42      |
| kg  | 2000         | 1942   | 1724   | 1601   | 1444   | 1354   | 1200    |
| ft  | 7'3" - 89'7" | 91'10" | 101'8" | 108'3" | 118'1" | 124'8" | 137'10" |
| lbs | 4410         | 4280   | 3800   | 3530   | 3180   | 2990   | 2650    |

HOEKDRUKKEN - RÉACTIONS - REACTIONS - ECKDRÜCKE - REAZIONI - REACCIONES



|    |         |     |
|----|---------|-----|
| m  | 42      | 230 |
| ft | 137'10" | 52  |
|    | 38      | 226 |
|    | 124'8"  | 51  |
|    | 33      | 224 |
|    | 108'3"  | 50  |



|    |         |     |
|----|---------|-----|
| m  | 42      | 180 |
| ft | 137'10" | 40  |
|    | 38      | 175 |
|    | 124'8"  | 39  |
|    | 33      | 166 |
|    | 108'3"  | 37  |

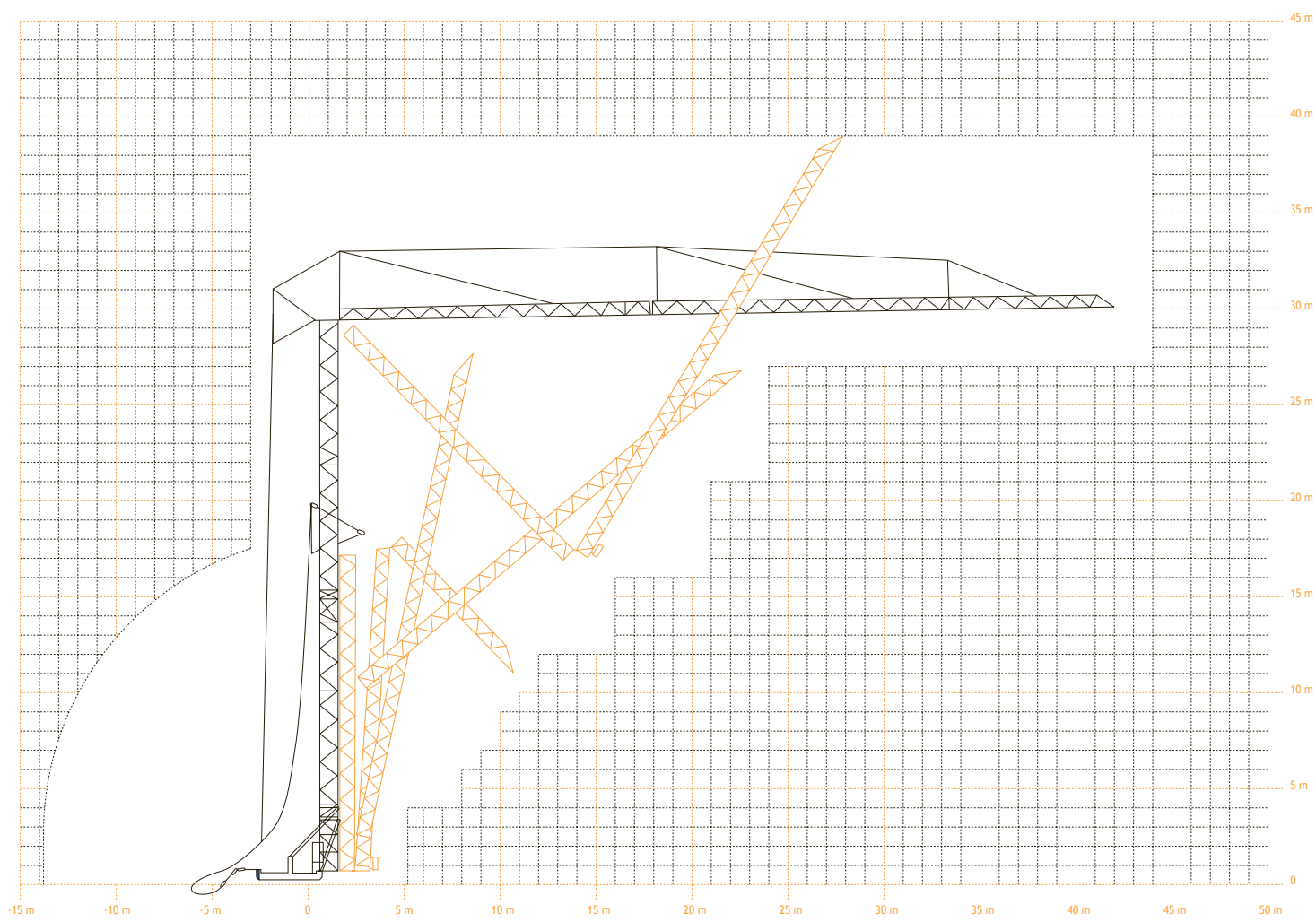
AANDRIJVINGEN - MÉCHANISMES - MECHANISMS - ANTRIEBE - MECCANISMI - MECANISMOS

|       |      |       |       |      |
|-------|------|-------|-------|------|
|       |      |       |       |      |
| m/min | 6,0  | 25,0  | 50,0  | 3,0  |
| kg    | 2000 | 2000  | 1250  | 4000 |
| fpm   | 20   | 82    | 164   | 10   |
| lbs   | 4410 | 4410  | 2760  | 8820 |
| kW    | 2,4  | 11,0  | 11,0  | 2,4  |
| HP    | ~3,2 | ~14,7 | ~14,7 | ~3,2 |

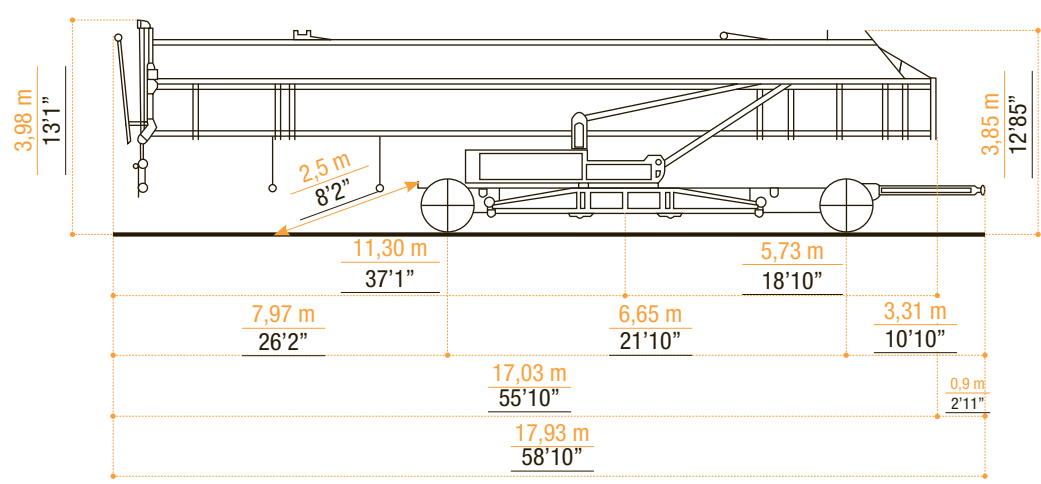
28 / 57  
~92 / 187


















|       |            |    |            |
|-------|------------|----|------------|
| m/min | 2 x 1,5 kW | 25 | 2 x 1,5 kW |
| fpm   | ~2 x 2 HP  | 82 | ~2 x 2 HP  |

VEREISTE MONTAGERUIMTE - ENCOMBREMENT AU MONTAGE - SPACE REQUIREMENT - ABMESSUNGEN - SPAZIO NECESSARIO PER IL MONTAGGIO



TRANSPORT



|  |  |  |  |  |  |   |
|--|--|--|--|--|--|---|
|  <ul style="list-style-type: none"> <li>• in bedrijf</li> <li>• en service</li> <li>• in service</li> <li>• in Betrieb</li> <li>• in servizio</li> <li>• en servicio</li> </ul>  |  <ul style="list-style-type: none"> <li>• buiten bedrijf</li> <li>• hors service</li> <li>• out of service</li> <li>• außer Betrieb</li> <li>• fuori servizio</li> <li>• fuera de servicio</li> </ul>   |  <ul style="list-style-type: none"> <li>• hijsen</li> <li>• levage</li> <li>• hoisting</li> <li>• heben</li> <li>• sollevamento</li> <li>• elevación</li> </ul>   |  <ul style="list-style-type: none"> <li>• loopkatriden</li> <li>• chariotage</li> <li>• jib trolleying</li> <li>• Katzfahren</li> <li>• traslazione carrello</li> <li>• poleas móviles</li> </ul> |  <ul style="list-style-type: none"> <li>• zwenken</li> <li>• orientation</li> <li>• slewing</li> <li>• Schwenken</li> <li>• rotazione</li> <li>• orientación</li> </ul>   |  <ul style="list-style-type: none"> <li>• spanning</li> <li>• tension</li> <li>• voltage</li> <li>• spannung</li> <li>• tensione</li> <li>• tensión</li> </ul>  |  <ul style="list-style-type: none"> <li>• gewicht zonder ballast</li> <li>• poids propre sans lest</li> <li>• weight without ballast</li> <li>• gewicht ohne Ballast</li> <li>• peso senza zavorra</li> <li>• peso sin lastre</li> </ul> |
|  <ul style="list-style-type: none"> <li>• lengte</li> <li>• longueur</li> <li>• length</li> <li>• länge</li> <li>• lunghezza</li> <li>• longitud</li> </ul>  |  <ul style="list-style-type: none"> <li>• spoor</li> <li>• translation</li> <li>• rail</li> <li>• Kranfahren</li> <li>• carreggiata</li> <li>• rail</li> </ul>  |  <ul style="list-style-type: none"> <li>• vermogen</li> <li>• puissance</li> <li>• power</li> <li>• leistung</li> <li>• potenza</li> <li>• potencia</li> </ul>  |  <ul style="list-style-type: none"> <li>• micro snelheid</li> <li>• vitesse</li> <li>• speed</li> <li>• Geschwindigkeit</li> <li>• velocità</li> <li>• velocidad</li> </ul>                       |  <ul style="list-style-type: none"> <li>• 2<sup>e</sup> snelheid</li> <li>• 2<sup>e</sup> vitesse</li> <li>• 2<sup>e</sup> speed</li> <li>• 2<sup>e</sup> Geschwindigkeit</li> <li>• 2<sup>a</sup> velocità</li> <li>• 2<sup>a</sup> velocidad</li> </ul> |  <ul style="list-style-type: none"> <li>• 3<sup>e</sup> snelheid</li> <li>• 3<sup>e</sup> vitesse</li> <li>• 3<sup>e</sup> speed</li> <li>• 3<sup>e</sup> Geschwindigkeit</li> <li>• 3<sup>a</sup> velocità</li> <li>• 3<sup>a</sup> velocidad</li> </ul> |  <ul style="list-style-type: none"> <li>• maximale hoekdruk</li> <li>• réactions</li> <li>• reactions</li> <li>• Eckdrücke : 10 kN = 1t</li> <li>• press. angolare massima</li> <li>• presión angular máxima</li> </ul>                  |
|  <ul style="list-style-type: none"> <li>• enkel inschering zonder hijsblok</li> <li>• simple mouflage sans moufle</li> <li>• 2 fall reeving without houstingblock</li> <li>• 2 Fach Einsicherung ohne Hakenflasche</li> <li>• passaggio semplice senza paranca</li> <li>• solamente elevación sin polea</li> </ul> |  <ul style="list-style-type: none"> <li>• enkel inschering met hijsblok</li> <li>• simple mouflage avec moufle</li> <li>• 2 fall reeving with houstingblock</li> <li>• 2 Fach Einsicherung mit Hakenflasche</li> <li>• passaggio semplice con paranca</li> <li>• solamente elevación con polea</li> </ul> |  <ul style="list-style-type: none"> <li>• dubbel inschering</li> <li>• double mouflage</li> <li>• 4 fall reeving</li> <li>• 4 Fach Einsicherung</li> <li>• passaggio doppio</li> <li>• elevación doble</li> </ul> |  |  |  |   |

Konform richtlijn 2000/14/EG betreffende geluidsemissie van materieel voor gebruik buitenshuis en wijzigingen. - également conforme aux dispositions de la directive "émission sonores des équipements utilisés à l'extérieur des bâtiments" 2000/14/CE et aux législations la transposant. - Requirements of directive 2000/14/CE "noise emission in the environment by equipment for use outdoors, as amended. - Bestimmung der Richtlinie "Lärmübertragung des ausserhalb der Gebäude benutzten Ausrüstungen" 2000/14/EG und den gesetzlichen Vorschriften.



**ARCOMET**

Industrieweg 139 - 3583 Paal-Beringen - BELGIUM - T +32 (0)11 450 950 - EMAIL [arcomet@arcomet.com](mailto:arcomet@arcomet.com) - [www.arcomet.com](http://www.arcomet.com)